

Peter George – Meridian Water Programme Director



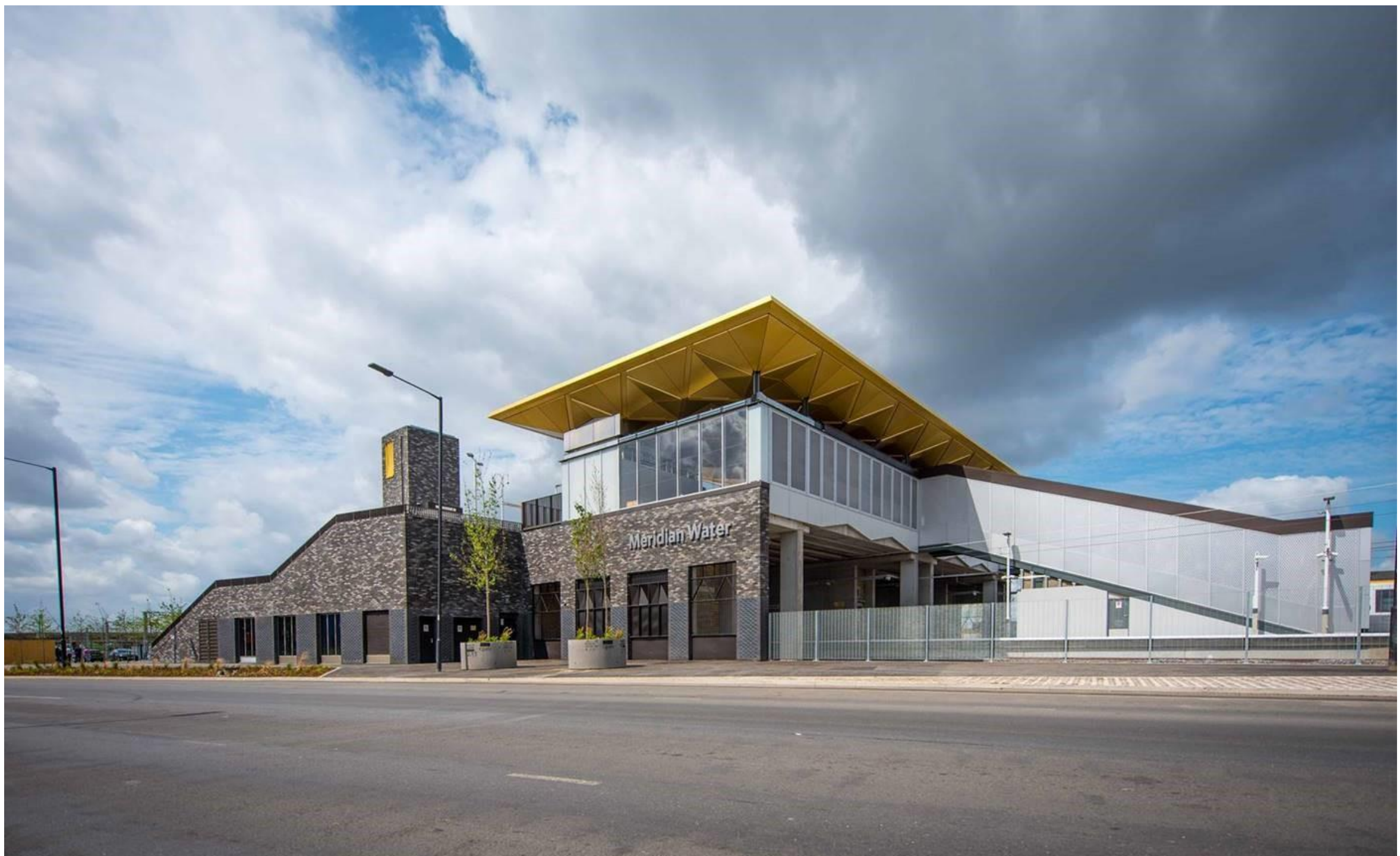


Former Angel Road station





**meridian
water**



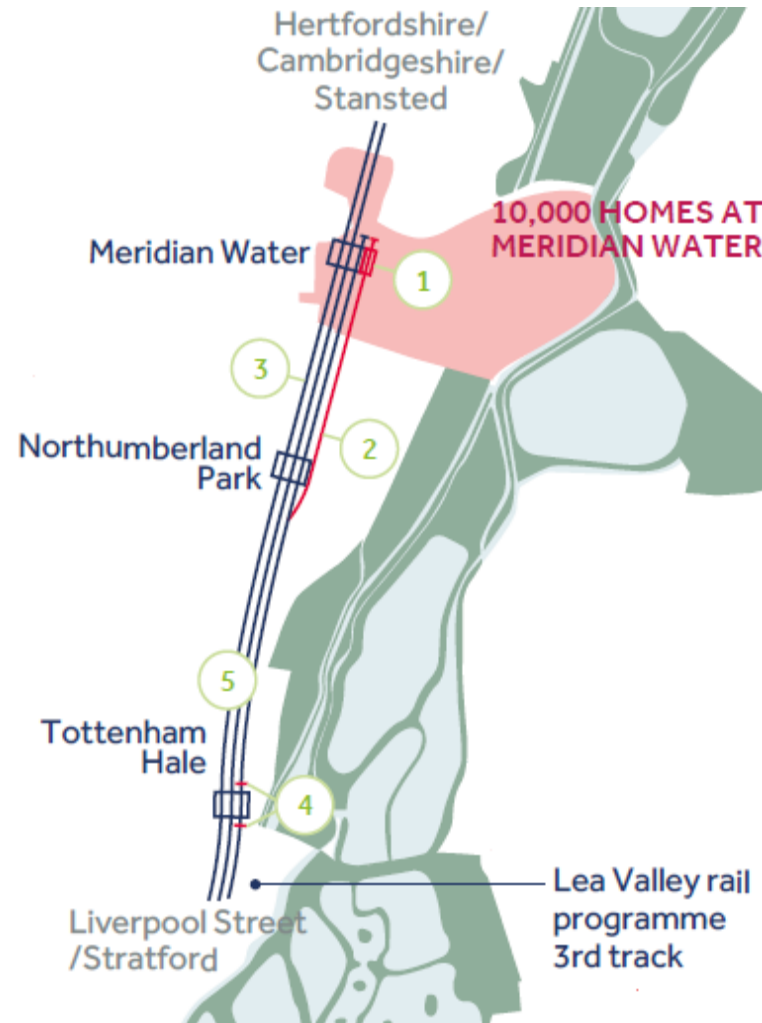
**meridian
water**

HIF proposal

HIF and housing delivery at Meridian Water



**£156
Million
Award**



**Trains per
an hour:
6-8 in
2023**

An aerial photograph of a city at dusk or dawn. The foreground shows a dense urban area with modern buildings, some with illuminated windows. A large, winding lake or river system is prominent in the middle ground, with several small boats on the water. The background shows a vast cityscape extending to the horizon under a hazy, golden sky. The word "Questions?" is overlaid in the center in a large, white, sans-serif font.

Questions?